

# ZIPATO MQTT DOCUMENTATION

# Table of contents

[Table of contents](#)

[Zipato Device Model introduction](#)

[Box status topics](#)

[Box actions](#)

[Network topics](#)

[Generic network actions](#)

[Z-Wave specific network actions](#)

[Device topics](#)

[Endpoint topics](#)

[ClusterEndpoint topics](#)

[Attribute topics](#)

[Attribute actions](#)

[Z-Wave device state transitions](#)

[Z-Wave binary sensor endpoints](#)

[Invoke interface](#)

[Available methods](#)

# Zipato Device Model introduction

Zipato device model is designed to be a generic abstraction layer that can be used to model various communication protocols and devices.

The device model is a hierarchy of entities that represent various aspects of any given protocol or device.

Zipato Device Model in general is comprised of several types of entities.

Each entity in the device model is uniquely identifiable with an [UUID](#).

Here is a simple overview of the device model hierarchy:

- Network(s)
  - Device(s)
    - Endpoint(s)
      - Cluster(s)
        - Attribute(s)

## Network

Networks usually represent a particular protocol, like Z-Wave or Zigbee for example. Networks can have one or more devices. Almost all networks have a few common actions, like adding a device, removing a device or resetting a device. A network can also have network specific actions.

## Device

A device represents an actual physical device, a wall plug or a door sensor for example. A device typically has one or more functions. Networks can have one or more devices.

## Endpoint

Endpoints are used for “partitioning” various functions and features of a device according to its features and limitations of the device model itself. There are no general rules on how endpoints should be used or what should they represent. However, each device usually has at least one endpoint, or several.

## Cluster

A cluster represents a particular device function, like a reed sensor of a door sensor, or a relay of a wall switch for example. An endpoint can contain one or more clusters that represent functions of a particular device.

**One important constraint of the device model is that an endpoint cannot contain more than one cluster of a particular type.**

For example, if a device has two relays, clusters representing these relays will of course be of the same type. But they cannot be under the same endpoint, each has to be under its own endpoint.

## **Attribute**

Attributes represent one or several states or values of a particular device function.

For example, reed sensor state of a door sensor or relay state of a wall plug can be modelled with a simple boolean value; Both can be either on or off.

That means that clusters that model these functions (simple binary sensor and simple binary actuator in this example) will have a single attribute that holds the current state of these functions.

Attributes can be readable, writable or both. For example an attribute of a cluster that models a simple binary sensor will be readable, but not writable. It makes no sense to “write” the state of a sensor device.

An attribute of a cluster that models simple binary actuators, like a relay of a wall plug, will be both readable and writable; You can check its state and you can change state.

## **Attribute definitions**

Attributes model, or “hold” so to speak, the current state or value of a particular function of a device. Certain device functions have additional associated data.

For example, a wall plug might have a meter function, one that can measure current power consumption and voltage.

Both of these functions have units that describe their values. An attribute definition is used to hold additional data about a certain device function. Each attribute has an associated attribute definition.

# How to enable MQTT on Zipato controllers

MQTT Network can be enabled via online REST API.

Basepath: <https://my.zipato.com/zipato-web/v2/networks>

Parameter content type: application/json

Method: POST

Example payload:

```
{
  "className": "com.zipato.network.mqtt.MqttNetwork",
  "broker": "tcp://127.0.0.1",
  "clientId": null,
  "username": null,
  "password": null,
  "topicBase": null,
  "topicPrefix": null
}
```

Payload property description:

- **className** - mandatory property, value MUST be "com.zipato.network.mqtt.MqttNetwork"
- **broker** - broker address, with transport protocol
- **clientId** - if set to null, clientId will default to Zipato serial of the current box
- **topicBase** - if set to null, topicBase will default to "/"
- **topicPrefix** - if set to null topic Prefix will default to "clientId":

To change any of the above mentioned properties at a later time use the following REST api call. Make sure to use proper network uuid.

Basepath: <https://my.zipato.com/zipato-web/v2/networks/{uuid}/config>

Parameter content type: application/json

Method: POST:

Example payload:

```
{
  "broker": "tcp://192.168.1.1"
}
```

# Box status topics

---

**Request Topic:** N/A,

**ResponseTopic:** /local/ha/bridges/zipato/conn\_status

**Payload type:** String, "online" or "offline"

**Description:** Last will configuration of Mqtt connection. sent automatically when client establishes connection and when connection is lost

---

**Request Topic:** /local/ha/bridges/zipato/box/info

**Response Topic:** request/box/info

**Request Topic Payload:** N/A

**Response Type:** JSON

**Response example:**

```
{
  "mqttApiVersion": "1.0.0",
  "boxSerial": "boxSerial",
  "boxFw": "boxFw"
}
```

**Description:** Sent automatically when client establishes connection or on request via request topic. Contains the box serial number, firmware version and current mqtt api version.

---

**Request Topic:** N/A

**Response Topic:** /local/ha/bridges/zipato/box/messages

**Request Topic Payload:** N/A

**Response type:** JSON

**Response Example:**

```
{
  {"SYSTEM":"STARTED"}
}
```

**Description:** Various unsolicited system messages.

# Box actions

---

## **Request box synchronisation**

**Request Topic:** request/box/sync

**Request Topic Payload:** N/A

**Response/Result topic:** /local/ha/bridges/zipato/box/messages

**Response Type:** JSON

## **Response Example:**

```
{"progress":"complete","command":"LOAD_ALL"}
```

**Description:** Start cloud synchronisation. At the moment this is still a necessary step after successful device discovery.

---

# Network topics

---

**Request Topic:** request/networks/list

**Request Topic Payload:** N/A

**Response Topic:** /local/ha/bridges/zipato/networks/list

**Response Type:** JSON

**Response Example:**

```
{
  "link": "/networks/df214ae6-653e-4d3d-a195-87c241799e82",
  "name": "IP",
  "uuid": "df214ae6-653e-4d3d-a195-87c241799e82"
}, {
  "link": "/networks/de6a9aa9-5555-4a99-8d46-54be03573569",
  "name": "IP backup",
  "uuid": "de6a9aa9-5555-4a99-8d46-54be03573569"
}, {
  "link": "/networks/a7c13a52-9e50-434c-b0e9-fa3b009163d5",
  "name": "Mqtt",
  "uuid": "a7c13a52-9e50-434c-b0e9-fa3b009163d5"
}, {
  "link": "/networks/f5f264a0-0473-4c10-92c7-0fcfd1cebd5c",
  "name": "Zwave",
  "uuid": "f5f264a0-0473-4c10-92c7-0fcfd1cebd5c"
}]
```

**Description:** A list of available networks on the current box.

---

**Request Topic:** request/networks/\$UUID/info

**Request Topic Payload:** N/A

**Response Topic:** /local/ha/bridges/zipato/networks/\$UUID/info

**Response Type:** JSON

**Description:** Various network specific data and current status. Also contains a list of devices in that network.

**Response Example:**

```
{
  "link": "networks/a7c13a52-9e50-434c-b0e9-fa3b009163d5",
  "config": {
    "className": "com.zipato.network.mqtt.MqttNetwork",
    "uuid": "a7c13a52-9e50-434c-b0e9-fa3b009163d5",
    "name": "Mqtt",
    "cv": 0,
    "sv": 0,
    "deleted": false,
    "nd": true,
    "tags": null,
    "order": null,
  }
}
```



```
        "param": null
    },
    "devices": [],
    "state": {
        "network": "a7c13a52-9e50-434c-b0e9-fa3b009163d5",
        "discovery": false,
        "online": false,
        "trouble": false
    },
    "stateTimestamp": "2016-04-04T19:44:59Z",
    "templateId": null,
    "uuid": "a7c13a52-9e50-434c-b0e9-fa3b009163d5"
}
```

---

**Request Topic:** N/A

**Request Topic Payload:** N/A

**Response Topic:** /local/ha/bridges/zipato/networks/\$UUID/messages

**Response Type:** JSON

**Description:** Unsolicited network messages that occur as a result of some network actions like network initialization, device discovery, device configuration or device deletion for example.

**Response Example:**

```
{
  {"secondary":false,"sisNodeid":1,"inclusionCtrl":false,"final":false,"primarySis":true,"zNodeid":1,"type":"INIT","homeId":3782768885,"
  network":"ZWAVE","status":"DONE"}
}
```

---

**Request Topic:** N/A

**Request Topic Payload:** N/A

**Response Topic:** /local/ha/bridges/zipato/networks/\$UUID/status

**Response Type:** JSON

**Description:** Unsolicited network messages that are usually sent when a network goes online or offline. A network usually comes online after it is initialized. A network usually goes offline if its initialization fails.

## Generic network actions

All network action response payloads are of course in json format. **Every** network action response json object has a couple of key properties:

- **type:** this property contains the name of the current action.
- **network:** this property contains the name of the network on which this particular action is executing

- `status`: Status of the current action
- `final`: This boolean property is used to denote the final response of the current action. A response that has the `final` field set to `true` marks the end of that action

Certain network actions will have more properties in their response objects.

A general limitation on almost all networks is that they can execute **one action at a time**.

---

### Start device discovery

**Request Topic:** `request/networks/UUID/command`

**Response/Result Topic:** `/local/ha/bridges/zipato/networks/UUID/messages`

**Request Topic Payload:**

```
{
  "className": "com.zipato.event.CommandEvent",
  "command": "DISCOVERY_ON"
}
```

### Optional properties:

- `secureInclusionDisabled` - setting this property to `true` will disable Z-Wave secure inclusion

**Description:** Generic action to start discovery on any network that supports device discovery.

---

### Stop device discovery

**Request Topic:** `request/networks/UUID/command`

**Response/Result Topic:** `/local/ha/bridges/zipato/networks/UUID/messages`

**Request Topic Payload:**

```
{
  "className": "com.zipato.event.CommandEvent",
  "command": "DISCOVERY_OFF"
}
```

**Description:** Generic action to stop discovery on any network that supports device discovery. On some networks, like Z-Wave for example, this command is also used to stop any current ongoing network action.

---

# Z-Wave specific network actions

Certain Z-Wave specific network actions names have been changed in firmware version 1.0.9.1:

- checkFailedNodes -> CHECK\_FAILED\_NODES
  - getProtocolStatus -> GET\_PROTOCOL\_STATUS
  - enableRadio -> ENABLE\_RADIO
  - disableRadio -> DISABLE\_RADIO
- 

## Start device exclusion

**Request Topic:** request/networks/UUID/command

**Response/Result Topic:** /local/ha/bridges/zipato/networks/UUID/messages

**Request Topic Payload:**

```
{
  "className": "com.zipato.event.CommandEvent",
  "command": "DELETE_DEVICE_ZW"
}
```

**Description:** Starts the exclusion procedure.

**Optional request payload parameters:**

- timeout: exclusion timeout, in seconds. Exclusion will be stopped if a device is not found in this time interval

**Response object properties:**

- type: "REMOVE"
  - Network: "ZWAVE"
  - nodeId: the node id of the removed node. This property will be set to 0 if a node from a different network was excluded
  - device: UUID of the removed device. This property is set if a known device was excluded
  - status:
    - STARTED: Z-Wave module now operating in exclusion mode
    - NODE\_FOUND: Z-Wave module has detected a device running in exclusion mode
    - SUCCESSFUL: Exclusion complete.
    - TIMEOUT: No device found for exclusion in 45 seconds, exclusion mode turned off
    - UNSUCCESSFUL: Exclusion failed, cause of failure set in message property
  - Message: cause of the exclusion failure
- 

## Start device inclusion

**Request Topic:** request/networks/UUID/command

**Response/Result Topic:** /local/ha/bridges/zipato/networks/UUID/messages

**Request Topic Payload:**

```
{
  "className": "com.zipato.event.CommandEvent",
  "command": "DISCOVERY_ON"
}
```

**Description:** Starts the inclusion procedure.

**Optional request payload parameters:**

- `timeout`: inclusion timeout, in seconds. Inclusion will be stopped if a device is not found in this time interval

**Response object properties:**

- `type`: "INCLUSION"
- `Network`: "ZWAVE"
- `status`:
  - `STARTED`: Z-Wave module now operating in inclusion mode
  - `DEVICE_FOUND`: Z-Wave module has detected a device running in inclusion mode
  - `SUCCESSFUL`: inclusion complete.
  - `NODE_ALREADY_INCLUDED`: Self explanatory
  - `TIMEOUT`: No device found for inclusion in 60 seconds, inclusion mode turned off
  - `FAILED`: Inclusion failed, cause of failure set in message property
- `Message`: cause of the exclusion failure

A successful inclusion is always followed by a secure inclusion procedure if the device supports the SECURITY command class:

**Secure inclusion procedure response object properties:**

- `type`: "SECURE\_INCLUSION"
- `Network`: "ZWAVE"
- `Status`:
  - `DONE`: Secure inclusion successful
  - `FAILED`: Secure inclusion failed, cause of failure set in message property
  - `TIMEOUT`: Secure inclusion timed out cause of timeout set in reason property
- `reason/message`: cause of timeout or failure

Secure inclusion may sometimes fail. The state of the device after that is mostly unknown. The device might be fully operational or certain features might not work. It is advised to exclude the device and include it again if secure inclusion fails.

A successful inclusion is also always followed by a device configuration procedure that interviews/configures the newly joined device:

**Device configuration response object properties:**

- `type`: "REDISCOVERY"
- `Network`: "ZWAVE"
- `Status`:
  - `SUCCESSFUL`: Device configuration successful

- UNSUCCESSFUL: Device configuration failed, cause of failure set in reason property
  - INVALID\_RESPONSE: Usually indicates a fatal exception during device configuration
  - TIMEOUT: Device configuration timed out, cause of timeout set in reason property
  - reason/message: cause of timeout or failure
- 

### **Start failed node check procedure.**

**Request Topic:** request/networks/UUID/command

**Response/Result Topic:** /local/ha/bridges/zipato/networks/UUID/messages

#### **Request Topic Payload:**

```
{"className": "com.zipato.event.CommandEvent", "command": "NETWORK_ACTION", "action": "CHECK_FAILED_NODES"}
```

**Description:** Starts the failed node check procedure.

#### **Device configuration response object properties:**

- action: "CHECK\_FAILED\_NODES"
  - Network: "ZWAVE"
  - Status:
    - STARTED
    - NO\_FAILED\_NODES
    - FAILED\_NODE\_FOUND: at least one failed node was found
    - FAILED: reason of failure set in reason property
  - Reason: cause of failure. A failure is always a missing response from the Z-Wave module. The field will indicate which response was not sent:
    - Missing list of failed nodes
    - Missing response to a failed node check
- 

### **Disable Z-Wave radio**

**Request Topic:** request/networks/UUID/command

**Response/Result Topic:** /local/ha/bridges/zipato/networks/UUID/messages

#### **Request Topic Payload:**

```
{"className": "com.zipato.event.CommandEvent", "command": "NETWORK_ACTION", "action": "DISABLE_RADIO"}
```

**Description:** Disables Z-Wave RF transmitter and blocks all RF communication.

#### **Device configuration response object properties:**

- action: "DISABLE\_RADIO"
- Network: "ZWAVE"
- Status:
  - STARTED

- DONE
- 

### **Enable Z-Wave radio**

**Request Topic:** request/networks/UUID/command

**Response/Result Topic:** /local/ha/bridges/zipato/networks/UUID/messages

**Request Topic Payload:**

```
{"className": "com.zipato.event.CommandEvent", "command": "NETWORK_ACTION", "action": "ENABLE_RADIO"}
```

**Description:** Enables Z-Wave radio and unblocks RF communication.

**Device configuration response object properties:**

- action: "ENABLE\_RADIO"
  - Network: "ZWAVE"
  - Status:
    - STARTED
    - DONE
- 

### **Get protocol status**

**Request Topic:** request/networks/UUID/command

**Response/Result Topic:** /local/ha/bridges/zipato/networks/UUID/messages

**Request Topic Payload:**

```
{"className": "com.zipato.event.CommandEvent", "command": "NETWORK_ACTION", "action": "GET_PROTOCOL_STATUS"}
```

**Description:** Retrieves current protocol status from the Z-Wave module.

**Device configuration response object properties:**

- action: "GET\_PROTOCOL\_STATUS"
  - Network: "ZWAVE"
  - Status:
    - STARTED
    - ZW\_PROTOCOL\_IS\_IDLE
    - ZW\_PROTOCOL\_STATUS\_ROUTING
    - ZW\_PROTOCOL\_STATUS\_SUC
    - UNKNOWN\_RETURN\_VALUE
    - FAILED: reason of failure set in reason property
  - Reason: cause of failure
- 

### **Get RF power level**

**Request Topic:** request/networks/UUID/info

**Response/Result Topic:** /local/ha/bridges/zipato/networks/UUID/messages

**Request Topic Payload:** N/A

**Description:** Current RF power level is contained within network specific information retrieved via this request topic

---

## Hard reset Z-Wave module

**Request Topic:** request/networks/UUID/command

**Response/Result Topic:** /local/ha/bridges/zipato/networks/UUID/messages

**Request Topic Payload:**

```
{"className": "com.zipato.event.CommandEvent", "command": "DISCOVERY_ON", "zwCmd": "zwHardReset"}
```

**Description:** Hard reset Z-Wave module by calling ZW\_SetDefault(). Deletes all node and routing data from the module and resets the controller node id to 1 and home id to a random value

**Device configuration response object properties:**

- type: "HARD\_RESET"
  - Network: "ZWAVE"
  - Status:
    - STARTED
    - DONE
    - FAILED: reason of failure set in reason property
  - Reason: cause of failure
-

## Set device specific configuration

**Request Topic:** request/networks/UUID/command

**Response/Result Topic:** /local/ha/bridges/zipato/devices/UUID/messages

### Example Request Topic Payload:

```
{"className":"com.zipato.event.CommandEvent","command":"DISCOVERY_ON",  
"paramId":"3","value":1,"zwDevUUID":"e0a52321-88d1-4f6a-9b83-9aba6afdcf27","zwCmd":"ZwConfHandle  
r_SET_CONF"}
```

**Description:** Set device specific configuration parameters via configuration command class commands.

### Response object properties:

- type: "SET\_CONF"
  - Network: "ZWAVE"
  - Status:
    - STARTED
    - WAITING\_WAKEUP\_NOTIFICATION: Waiting for the device to wake up
    - TIMEOUT\_WAKEUP\_NOTIFICATION: Timed out while waiting for the device to wake up (30 seconds)
    - DONE
    - FAILED: Indicates failed transmission for SET command and missing report for GET command
  - paramId: current configuration parameter
  - value: value of the current configuration parameter
- 

## Get device specific configuration

**Request Topic:** request/networks/UUID/command

**Response/Result Topic:** /local/ha/bridges/zipato/devices/UUID/messages

### Example Request Topic Payload:

```
{"className":"com.zipato.event.CommandEvent","command":"DISCOVERY_ON","paramId":"3",  
"zwDevUUID":"e0a52321-88d1-4f6a-9b83-9aba6afdcf27","zwCmd":"ZwConfHandler_GET_CONF"}
```

**Description:** Get device specific configuration parameters via configuration command class commands.

### Response object properties:

- type: "GET\_CONF"
  - Network: "ZWAVE"
  - Status:
    - STARTED
    - WAITING\_WAKEUP\_NOTIFICATION: Waiting for the device to wake up
    - TIMEOUT\_WAKEUP\_NOTIFICATION: Timed out while waiting for the device to
    - DONE
    - FAILED: reason of failure set in reason property
  - paramId: current configuration parameter
  - value: value of the current configuration parameter
  - Reason: cause of failure
-



## Backup Z-Wave module protocol data

**Request Topic:** request/networks/UUID/command

**Response/Result Topic:** /local/ha/bridges/zipato/devices/UUID/messages

### Example Request Topic Payload:

```
{"className": "com.zipato.event.CommandEvent", "command": "DISCOVERY_ON", "zwCmd": "zwBackup"}
```

**Description:** Backup Z-Wave module protocol data to a file. Data will be written to \$ZIPATO\_HOME/storage/zwaveProtocolDataBackup.bin file.

### Response object properties:

- type: "BACKUP"
  - Network: "ZWAVE"
  - Status:
    - STARTED
    - DONE
    - FAILED: reason of failure set in reason property
  - Reason: cause of failure
- 

## Restore Z-Wave module protocol data

**Request Topic:** request/networks/UUID/command

**Response/Result Topic:** /local/ha/bridges/zipato/devices/UUID/messages

### Example Request Topic Payload:

```
{"className": "com.zipato.event.CommandEvent", "command": "DISCOVERY_ON", "zwCmd": "zwRestore"}
```

**Description:** Restore Z-Wave module protocol data from a file. Data will be read from \$ZIPATO\_HOME/storage/zwaveProtocolDataBackup.bin file.

### Response object properties:

- type: "RESTORE"
- Network: "ZWAVE"
- Status:
  - STARTED
  - DONE
  - FAILED: reason of failure set in reason property
- Reason: cause of failure

## Remove failed node

**Request Topic:** request/networks/UUID/command

**Response/Result Topic:** /local/ha/bridges/zipato/networks/UUID/messages

### Example Request Topic Payload:

```
{"className":"com.zipato.event.CommandEvent","command":"DISCOVERY_ON","zwDevUUID":"UUID","zwCmd":"zwRemoveFailedNode"}
```

**Description:** Starts the exclusion procedure.

### Response object properties:

- type: "REMOVE\_FAILED\_NODE"
- Network: "ZWAVE"
- status:
  - STARTED: Remove failed node procedure started
  - CANNOT\_REMOVE: Node is reachable, it cannot be removed
  - DONE: Failed node removed
  - FAILED: Failed to remove node, cause of failure set in reason property
- reason: cause of the failed node removal failure

## Replace failed node

**Request Topic:** request/networks/UUID/command

**Response/Result Topic:** /local/ha/bridges/zipato/networks/UUID/messages

### Example Request Topic Payload:

```
{"className":"com.zipato.event.CommandEvent","command":"DISCOVERY_ON","zwDevUUID":"UUID","zwCmd":"zwReplaceFailedNode"}
```

**Description:** Used to replace a non-responding node with a new one. The node id of the new node is the same as the node id of the replaced device. Please note that the response object properties are mostly the same as when starting an inclusion procedure since both basically do the same thing.

### Response object properties:

- type: "INCLUSION"
- Network: "ZWAVE"
- status:
  - STARTED: Replace failed node procedure started
  - NODE\_FOUND: Z-Wave module has detected a device running in inclusion mode
  - DONE: Node replaced
  - FAILED: Failed to replace node, cause of failure set in reason property
- reason: cause of the failed node replace failure

## Start learn mode

**Request Topic:** request/networks/UUID/command

**Response/Result Topic:** /local/ha/bridges/zipato/networks/UUID/messages

### Example Request Topic Payload:

```
{"className": "com.zipato.event.CommandEvent", "command": "DISCOVERY_ON", "zwDevUUID": "UUID", "zwCmd": "zwstartCtrlLearnMode", "nwi": false}
```

### Request object properties:

- **nwi:** true or false, enable or disable network wide inclusion

**Description:** Learn mode is used for a number of things:

- Add the controller to a network
  - Controller will receive new node id and home id
  - Controller will receive basic data about all the devices in the network
  - Controller will perform only basic configuration for each device in the network (Query each device for command classes that should be encrypted, set associations to primary controller and this controller)
  - The network role of the added controller depends on the role of the including controller:
    - If the including controller is a regular primary controller the controller included will become a secondary controller. Secondary controller can NOT add or remove other device to the network.
    - If the including controller is a primary SIS controller the controller included will become an inclusion controller. Inclusion controller can add or remove other devices from the network but it cannot independently assign new node ids to devices added to the network. Inclusion controller will ask the primary controller to assign a node id to new devices added to the network
- Exclude the controller from the network
  - Effectively, this is the same as calling hard reset. Controller will receive new home ide and node id 1. All device data will be deleted.
- Replicate data from primary controller to this controller
  - This is used to update device data if devices were added or removed by the primary controller
- Transfer primary controller role from other controller to this controller

### Response object properties:

- **type:** "CTRL\_LEARN\_MODE"
- **Network:** "ZWAVE"
- **status:**
  - DONE: Learn mode done. Outcome of the procedure is set in the outcome property
  - FAILED: Learn mode failed, cause of failure set in state property
  - TIMEOUT: Learn mode timed out. Cause of timeout set in state property
- **state:** cause learn mode failure
- **Outcome:** can be set to the following values:

- INCLUSION
  - Controller included into network
- EXCLUSION
  - Controller excluded from network
- REPLICATION
  - Device data replicated from primary controller to this controller
- PRIMARY\_ROLE\_RECEIVED
  - This controller is now the primary controller
  -

**These commands are only applicable to devices that support the WAKE\_UP command class. All battery powered devices (except FLIRS devices) support this command class.**

### **Set device wakeup interval**

**Request Topic:** request/networks/UUID/command

**Response/Result Topic:** /local/ha/bridges/zipato/devices/UUID/messages

#### **Example Request Topic Payload:**

```
{"className": "com.zipato.event.CommandEvent", "command": "DISCOVERY_ON",  
"value": 60, "zwDevUUID": "e0a52321-88d1-4f6a-9b83-9aba6afdcf27", "zwCmd": "ZwConfHandler_SET_WAKE  
UP"}
```

**Description:** Set device wakeup interval. Wakeup interval is defined in minutes

#### **Response object properties:**

- type: "SET\_WAKEUP"
  - Network: "ZWAVE"
  - Status:
    - STARTED
    - WAITING\_WAKEUP\_NOTIFICATION: Waiting for the device to wake up
    - TIMEOUT\_WAKEUP\_NOTIFICATION: Timed out while waiting for the device to wake up (30 seconds)
    - DONE
    - FAILED: reason of failure set in reason property
  - value: new wakeup interval, in minutes
  - Reason: cause of failure
- 

### **Get device wakeup interval**

**Request Topic:** request/networks/UUID/command

**Response/Result Topic:** /local/ha/bridges/zipato/devices/UUID/messages

#### **Example Request Topic Payload:**

```
{"className": "com.zipato.event.CommandEvent", "command": "DISCOVERY_ON",  
"zwDevUUID": "e0a52321-88d1-4f6a-9b83-9aba6afdcf27", "zwCmd": "ZwConfHandler_GET_WAKEUP"}
```

**Description:** Get device wakeup interval. Wakeup interval is defined in minutes

#### **Response object properties:**

- type: "GET\_WAKEUP"
- Network: "ZWAVE"
- Status:
  - STARTED
  - WAITING\_WAKEUP\_NOTIFICATION: Waiting for the device to wake up
  - TIMEOUT\_WAKEUP\_NOTIFICATION: Timed out while waiting for the device to
  - DONE
  - FAILED: reason of failure set in reason property
- value: current wakeup interval, in minutes
- Reason: cause of failure

## Z-Wave device firmware upgrade

**Request Topic:** request/networks/UUID/command

**Response/Result Topic:** /local/ha/bridges/zipato/networks/UUID/messages

**Example Request Topic Payload:**

```
{
  "className": "com.zipato.event.CommandEvent",
  "command": "DISCOVERY_ON",
  "zwCmd": "fwUpgrade",
  "zwDevUUID": "b9cc5be6-356a-468b-a78f-41e9c0a3f49a",
  "filePath": "/root/fw.hex"
}
```

**Description:** Starts the OTA firmware update procedure.

**Response object properties:**

- type: "ZW\_DEV\_OTA"
- Network: "ZWAVE"
- status:
  - STARTED: Firmware update procedure started
  - IN\_PROGRESS: Firmware update progress indication, in increments of 4 percent
  - DONE: Firmware update procedure successful
  - FAILED: Failed to remove node, cause of failure set in reason property
- reason: cause of the failed node removal failure
- devUUID: UUID of device being upgraded
- percent: Firmware update progress

# Device topics

---

## Get device data

**Request Topic:** request/devices/UUID/info

**Request Topic Payload:** N/A

**Response Topic:** /local/ha/bridges/zipato/devices/UUID/info

**Response Type:** JSON

**Description:** Retrieves device specific data, current state and a list of device endpoints

**Payload Example:**

```
{
  "link": "devices/3354b3a4-3d90-4317-aa70-5c4ba4103f38",
  "config": {
    "className": "com.zipato.network.zwave.ZwaveDevice",
    "uuid": "3354b3a4-3d90-4317-aa70-5c4ba4103f38",
    "name": "Danfoss Thermostat",
    "cv": 0,
    "sv": 0,
    "deleted": false,
    "nd": true,
    "tags": null,
    "order": null,
    "descriptorFlags": null,
    "locationId": null,
    "templateId": null,
    "description": null,
    "model": "8005-0001",
    "serial": null,
    "firmware": null,
    "periodicallyWakeUp": true,
    "status": "ENABLED",
    "user": null,
    "hidden": false,
    "wakeUpInterval": 300000,
    "savedWakeUpInterval": 300000,
    "showIcon": false,
    "iconId": 0,
    "userIconId": 0,
    "iconColors": null,
    "configuration": null,
    "zwManufacturerId": 2,
    "productTypeId": -32763,
    "productId": 1,
    "appVersion": 2,
    "appSubVersion": 6,
    "nodeId": 7,
    "type": "SLAVE",
    "alwaysListening": false,
    "minWakeUpInterval": 60000,
    "maxWakeUpInterval": 900000,
  }
}
```

```
    "defaultWakeUpInterval": 300000,
    "wakeUpIntervalStep": 60000,
    "sensor1000ms": false,
    "sensor250ms": false,
    "iconType": null,
    "roleType": null,
    "basicDevClass": "ROUTING_SLAVE",
    "genericDevClass": "THERMOSTAT",
    "specificDevClass": "SETPOINT_THERMOSTAT",
    "sleeping": false,
    "eventMap": null,
    "listening": false,
    "usesStateChangeNotification": false,
    "noBatteryCheck": false,
    "assocGrpBlacklist": [],
    "crc16Encap": false,
    "neighborNodes": ["ZIPATO_CONTROLLER_NODE_ID_1"],
    "securelyIncluded": null,
    "acceptMulticasts": false,
    "alternateVnodeAssoc": false,
    "associationGroups": null,
    "manufacturerId": "2",
    "parent": "f5f264a0-0473-4c10-92c7-0fcfd1cebd5c"
  },
  "endpoints": [{
    "link": "/endpoints/7a8c09b1-aa57-476d-9a8a-5610241e0755",
    "name": "Thermostat",
    "uuid": "7a8c09b1-aa57-476d-9a8a-5610241e0755"
  }],
  "network": {
    "link": "/networks/f5f264a0-0473-4c10-92c7-0fcfd1cebd5c",
    "name": "Zwave",
    "uuid": "f5f264a0-0473-4c10-92c7-0fcfd1cebd5c"
  },
  "state": {
    "device": "3354b3a4-3d90-4317-aa70-5c4ba4103f38",
    "batteryTimestamp": 1459802516562,
    "sentTimestamp": 1459802517766,
    "online": true,
    "trouble": true,
    "receiveTimestamp": 1459802516863,
    "onlineState": "TROUBLE",
    "mainsPower": false,
    "batteryLevel": 70
  },
  "templateId": null,
  "uuid": "3354b3a4-3d90-4317-aa70-5c4ba4103f38"
}
```



# Endpoint topics

## Get endpoint data

**Request Topic:** request/endpoints/UUID/info

**Request Topic Payload:** N/A

**Response Topic:** /local/ha/bridges/zipato/endpoints/UUID/info

**Response Type:** JSON

**Description:** Retrieves endpoint specific data, parent device and network and a list of cluster endpoints

## Response Example:

```
{
  "link": "endpoints/7a8c09b1-aa57-476d-9a8a-5610241e0755",
  "attributes": [],
  "clusterEndpoints": [{
    "link": "/clusterEndpoints/cb9ba097-f89c-4d20-ac10-71d42d25fde9",
    "name": "Clock",
    "uuid": "cb9ba097-f89c-4d20-ac10-71d42d25fde9"
  }, {
    "link": "/clusterEndpoints/4aa2f95e-40e6-4622-8487-0f0c866fb7e4",
    "name": "Thermostat Setpoints",
    "uuid": "4aa2f95e-40e6-4622-8487-0f0c866fb7e4"
  }
],
  "config": {
    "className": "com.zipato.network.zwave.ZwaveEndpoint",
    "uuid": "7a8c09b1-aa57-476d-9a8a-5610241e0755",
    "name": "Thermostat",
    "cv": 0,
    "sv": 0,
    "deleted": false,
    "nd": true,
    "tags": null,
    "order": null,
    "type": null,
    "category": "ACTUATOR",
    "locationId": null,
    "iconType": null,
    "hidden": false,
    "status": "ENABLED",
    "description": null,
    "templateId": null,
    "descriptorFlags": null,
    "showIcon": false,
    "iconId": 0,
    "userIconId": 0,
    "iconColors": null,
    "genericDevClass": "THERMOSTAT",
    "configuration": null,
    "specificDevClass": "SETPOINT_THERMOSTAT",
    "optionalFunc": false,
    "cmdClassServer": ["COMMAND_CLASS_MULTI_CMD", "COMMAND_CLASS_CLOCK",
"COMMAND_CLASS_THERMOSTAT_SETPOINT", "COMMAND_CLASS_VERSION", "COMMAND_CLASS_PROTECTION",
```

```
"COMMAND_CLASS_MANUFACTURER_PROPRIETARY", "COMMAND_CLASS_CLIMATE_CONTROL_SCHEDULE",
"COMMAND_CLASS_BATTERY", "COMMAND_CLASS_MANUFACTURER_SPECIFIC", "COMMAND_CLASS_WAKE_UP"],
  "cmdClassClient": ["COMMAND_CLASS_MULTI_CMD", "COMMAND_CLASS_CLOCK",
"COMMAND_CLASS_MANUFACTURER_PROPRIETARY", "COMMAND_CLASS_CLIMATE_CONTROL_SCHEDULE"],
  "zwlconType": null,
  "groupid": 0,
  "mainEndpoint": true,
  "multiInstanceid": 0,
  "cmdClassVersionMap": {
    "COMMAND_CLASS_WAKE_UP": 2
  },
  "tag": null,
  "epld": 0,
  "eventsToGroup": null,
  "eventsToInstance": null,
  "mute": false,
  "securityCmdClasses": null,
  "ignoreAssoc": false,
  "parent": "3354b3a4-3d90-4317-aa70-5c4ba4103f38"
},
"device": {
  "link": "/devices/3354b3a4-3d90-4317-aa70-5c4ba4103f38",
  "name": "Danfoss Thermostat",
  "uuid": "3354b3a4-3d90-4317-aa70-5c4ba4103f38"
},
"network": {
  "link": "/networks/f5f264a0-0473-4c10-92c7-0fcfd1cebd5c",
  "name": "Zwave",
  "uuid": "f5f264a0-0473-4c10-92c7-0fcfd1cebd5c"
},
"sourceBindings": [],
"targetBindings": [],
"templateid": null,
"uuid": "7a8c09b1-aa57-476d-9a8a-5610241e0755"
}
```

# ClusterEndpoint topics

## Get clusterEndpoint data

**Request Topic:** request/clusterEndpoints/UUID/info

**Request Topic Payload:** N/A

**Response Topic:** /local/ha/bridges/zipato/clusterEndpoints/UUID/info

**Response Type:** JSON

**Description:** Retrieves cluster endpoint specific data, parent device, endpoint and network and a list of child attributes.

## Response Example:

```
{
  "link": "clusterEndpoints/cb9ba097-f89c-4d20-ac10-71d42d25fde9",
  "attributes": [],
  "category": "OTHER",
  "clusterClass": "com.zipato.cluster.Clock",
  "config": {
    "className": "com.zipato.cluster.zwave.ZwaveClock",
    "uuid": "cb9ba097-f89c-4d20-ac10-71d42d25fde9",
    "name": "Clock",
    "cv": 0,
    "sv": 0,
    "deleted": false,
    "nd": true,
    "tags": null,
    "order": null,
    "queryInterval": null,
    "queryAttributes": null,
    "attributeDefs": null,
    "shouldBeQueried": true,
    "isSecurity": false,
    "hidden": false,
    "templateId": null,
    "showIcon": false,
    "iconId": 0,
    "userIconId": 0,
    "iconColors": null,
    "clusterClass": "com.zipato.cluster.Clock",
    "parent": "7a8c09b1-aa57-476d-9a8a-5610241e0755"
  },
  "device": {
    "link": "/devices/3354b3a4-3d90-4317-aa70-5c4ba4103f38",
    "name": "Danfoss Thermostat",
    "uuid": "3354b3a4-3d90-4317-aa70-5c4ba4103f38"
  },
  "endpoint": {
    "link": "/endpoints/7a8c09b1-aa57-476d-9a8a-5610241e0755",
    "name": "Thermostat",
    "uuid": "7a8c09b1-aa57-476d-9a8a-5610241e0755"
  },
  "network": {
    "link": "/networks/f5f264a0-0473-4c10-92c7-0fcfd1ceb5c",
    "name": "Zwave",

```

```
    "uuid": "f5f264a0-0473-4c10-92c7-0fcfd1cebd5c"
  },
  "templated": null,
  "uuid": "cb9ba097-f89c-4d20-ac10-71d42d25fde9"
}
```

## Attribute topics

---

### Get attribute data

**Request Topic:** request/attributes/UUID/info

**Request Topic Payload:** N/A

**Response Topic:** /local/ha/bridges/zipato/attributes/UUID/info

**Response Type:** JSON

**Description:** Retrieves attribute data.

**Response example:**

```
{
  "uuid": "b0334f5b-572d-4bbf-851b-356c76161ca4",
  "name": "VALVE_POSITION",
  "attribute": "value",
  "attributeld": 8,
  "clusterUuid": "bef380ce-3fb6-4e8f-8518-3563c7252787",
  "reported": true,
  "unit": "%",
  "precision": 0,
  "scale": 1.0
}
```

### Attribute values

**Topic:** /local/ha/bridges/zipato/attributes/UUID/attributeChangeEvents

**Request Topic:** N/A

**Request Topic Payload:** N/A

**Response Topic:** /local/ha/bridges/zipato/attributes/UUID/info

**Response Type:** JSON

**Description:** Unsolicited attribute change events.

**Response example:**

```
{
  "className": "com.zipato.event.ThermostatSetpointValueEvent",
  "clusterClass": "com.zipato.cluster.ThermostatSetpoint",
  "attribute": "value1",
  "value": 21.0,
  "timestamp": 1459803817093,
  "setpointType": "HEATING",
  "source": "7a8c09b1-aa57-476d-9a8a-5610241e0755"
}
```

---

# Attribute actions

---

## Set attribute

**Request Topic:** request/attributes/UUID/textValue

**Response/Result Topic:** /local/ha/bridges/zipato/attributes/UUID/attributeChangeEvents

**Request Topic Payload Type:** String

**Payload example:** true, false (for binary switches for example)

**Description:** Set attribute state with plain strings

---

## Set attribute

**Request Topic:** request/attributes/UUID/value

**Response/Result Topic:** /local/ha/bridges/zipato/attributes/UUID/attributeChangeEvents

**Request Topic Payload Type:** JSON

**Payload example:** (for binary switches for example)

```
{  
  "value": "true"  
}
```

**Description:** Set attribute state with simple JSON objects

---

## Get current attribute value

**Request Topic:** request/attributes/UUID/getValue

**Response/Result Topic:** /local/ha/bridges/zipato/attributes/UUID/currentValue

**Request Topic Payload Type:** N/A

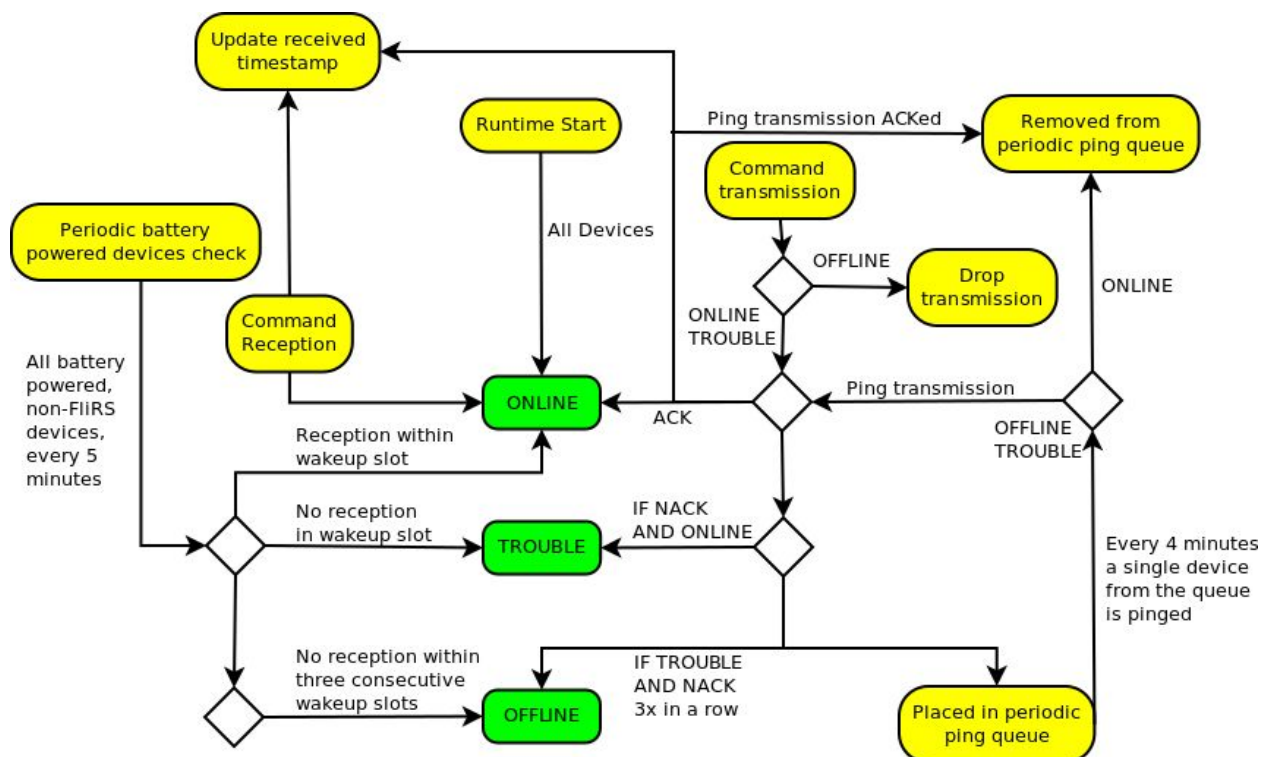
### Example response:

```
{"value": "No Active Events", "timestamp": "2016-08-09T10:38:15Z"}
```

**Description:** Get current attribute value. At the moment the values are not persisted to permanent storage.

# Z-Wave device state transitions

- A device can be in three states:
  - ONLINE - The controller can send and receive transmissions from the device without issues
  - TROUBLE- Intermittent transmission or reception problems
  - OFFLINE - Three consecutive transmissions have failed, or no reception from a battery powered device for three consecutive wakeup intervals, the device is considered unreachable
- State transition events are sent to `/local/ha/bridges/zipato/devices/$UUID/status` MQTT topics
- The state machine diagram consists of the following elements:
  - **Actions** - Yellow objects
  - **States** - Green objects
  - **Branches** - White objects



## Z-Wave binary sensor endpoints

Certain devices can have more than one binary sensor. These sensors will usually be presented as individual endpoints with a **single** (meaning such an endpoint has only one cluster) `ZwaveAlarmSensor` or `ZwaveSensorSensorBinary` cluster. Such endpoints can be distinguished with the `epId` property. A table of `epId` values for endpoints that contain either a `ZwaveAlarmSensor` or a `ZwaveSensorSensorBinary` is shown below.

Sensor type	<code>ZwaveAlarmSensor</code>	<code>ZwaveSensorSensorBinary</code>
ALL_PURPOSE/GENERAL_PURPOSE	156	49
SMOKE	157	50
CO	158	51
CO2	159	52
HEAT	160	53
WATER	161	54
FREEZE	162	55
TAMPER	163	56
AUX	164	57
DOOR_WINDOW	165	58
TILT	166	59
MOTION	167	60
GLASS_BREAK	168	61

# Invoke interface

Invoke interface is a simple JSON RPC mechanism which can be used to invoke methods of certain objects. The invoke interface is available for the following object types:

- networks
- devices
- endpoints
- clusterEndpoints

## Request topic:

request/OBJECT\_TYPE/UUID/invoke

## Response topic:

request/OBJECT\_TYPE/UUID/messages

## Request JSON payload properties:

- methodName - Self explanatory, the name of the method that needs to be invoked
- arg[1-9] - method arguments

## Request JSON payload example:

```
{
  "methodName": "userCodeSet",
  "arg1": 1,
  "arg2": "1111"
}
```

## Response JSON object:

- Each invocation will return a result indicating a successful invocation, or an error. A successful invocation will always return: "Invocation success: methodName"
  - If an error occurs an error message will be returned. An error usually indicates an invalid method name, invalid number of arguments, wrong argument type or a JSON parsing error
- Additionally, certain methods will have specific response objects



## Available methods

---

### setName

**Description:** Change the name of the target object

**Method name :** setName

**Argument count:** 1

**Argument 1:** object name

**Argument 1 type:** string

**Target object:** all objects

---

### userCodeSet

**Description:** Set specific door lock user code.

**Method name:** userCodeSet

**Argument count:** 2

**Argument 1:** User code slot

**Argument 1 type:** type: Integer

**Argument 2:** PIN Code

**Argument 2 type:** String (Please note that available characters are the ones available on the device keypad!)

**Target object:** ZwaveUserCodeInput cluster

---

### userCodeGet

**Description:** Retrieve specific door lock user code.

**Method name:** userCodeGet

**Argument count:** 1

**Argument 1:** User code slot

**Argument 1 type:** Integer

**Target object:** ZwaveUserCodeInput cluster

## **setIgnoreDeprecatedCc**

**Description:** Disables handling of deprecated command classes for Z-Wave Plus devices.

Current list of deprecated command classes:

    SENSOR\_BINARY (replaced by NOTIFICATIONS command class)

    ALARM\_SENSOR (replaced by NOTIFICATIONS command class)

**Method name:** setIgnoreDeprecatedCc

**Argument count:** 1

**Argument 1:** true/false (false by default)

**Argument 1 type:** boolean

**Target object:** Zwave network

---

## **setAssociationPolicy**

**Description:** set Z-Wave association policy for Z-Wave Plus devices. Current available association policies:

    LIFELINE\_ONLY - Only associate with Lifeline association group

    ALL\_GROUPS - Associate with all association groups

**Method name:** setAssociationPolicy

**Argument count:** 1

**Argument 1:** name of association policy

**Argument 1 type:** String

**Target object:** Zwave network